

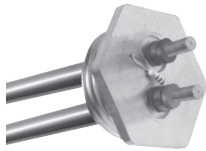


The new degree of comfort.™

Professional™ electric water heater line is engineered for longer life – resistored heating elements and anode rod up to a 10-year warranty

Efficiency

- Stand by watts loss 56 - 97
- Isolated tank design reduces conductive heat loss
- High efficiency resistored heating element for added protection to prolong anode rod and tank life

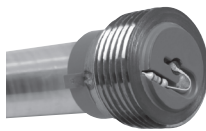


Performance

- FHR: 42 - 88 gallons based on gallon capacity
- Recovery rate is 21 gallons at a 90 degree Fahrenheit rise**

Features

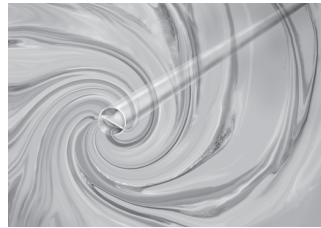
- High performance and lower operating cost
- Compliant with many electric utility incentive programs
- Resistored anode rod equalizes aggressive water action and prolongs the life of the water heater



- Electric junction box located above heating elements for easy installation
- Over-temperature protector cuts off power in excess temperature situations
- Automatic thermostat keeps water at desired temperature

Plus...

- EverKleen™ self cleaning device fights harmful sediment build-up with a high-velocity spiraling water stream – helps operating efficiency by saving energy, money and improving tank life



- Brass drain valve
- Temperature and pressure relief valve included

Warranty

- 8-Year limited tank and 6-year parts warranty with a professional installation*
- With ProtectionPlus™ the 8-year limited tank warranty becomes 10-year

*See Residential Warranty Certificate for complete information



Professional™
39 and 63 Imperial Gallon
Capacities
240 Volt AC/Single Phase
Electric



†LEED Point = 1

See dimensions chart on back.



INTEGRATED HOME COMFORT



The new degree of comfort.™



Residential Electric
Professional Water Heaters

DESCRIPTION				FEATURES					ROUGHING IN DIMENSIONS									STANDBY WATTS LOSS
MODEL NUMBER	STORAGE CAPACITY			ELEMENTS QTY.	STANDARD ELEMENTS				OVERALL HEIGHT A		DIAMETER B		HEIGHT TO DRAIN VALVE C		ESTIMATED SHIPPING WEIGHT			
	U.S. GALS.	IMP. GALS.	LITRES		208 VOLT WATT.	AMP.	240 VOLT WATT.	AMP.	IN.	MM	IN.	MM	IN.	MM	LBS.	KG		
TOP INLET																		
PRO415TM**	45	39	178	2	2250	10.8	3000	12.5	46	1168	21-3/4	552	3-1/2	89	117	53	66	
PRO415BC-3	45	39	178	2	2250	10.8	3000	12.5	49	1245	22.25	565.15	3.5	89	130	59	61	
PRO415BC-3	45	39	178	2	2850	10.8	3800	12.5	49	1245	22.25	565.15	3.5	89	130	59	61	
PRO425TM	45	39	178	2	2250	10.8	3000	12.5	46	1168	24-1/4	616	3-1/2	89	134	61	56	
PRO615TM**	72	63	285	2	3380	16.3	4500	18.8	59	1499	23	584	3-1/2	89	177	80	87	
PRO620TM	72	63	285	2	3380	16.3	4500	18.8	59	1499	24-1/2	622	3-1/2	89	188	85	72	
BOTTOM INLET																		
PRO415BC-2	45	39	178	2	2250	10.8	3000	12.5	46	1168	21-3/4	552	3-1/2	89	117	53	70	
PRO615BC-2	72	63	285	2	3380	16.3	4500	18.8	59	1499	23	584	3-1/2	89	177	80	97	

**Not available for purchase in British Columbia

Notes: 3/4" N.P.T. Outlet, Inlet, Anode Rod, T&P Valve Connections. • 60°C (140°F) Thermostat Setting. • Not available in 3 phase wiring.
• Heaters furnished with standard 240 volt AC, single phase non-simultaneous wiring, and 4500 watt upper and lower heating elements.

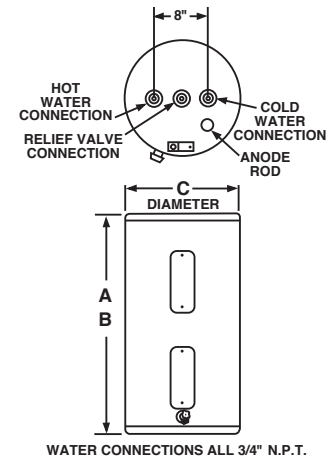
**Recovery = wattage/2.42 x temp. rise °F.
Example: $\frac{4500W}{2.42 \times 90^\circ} = 21 \text{ GPH}$

**Recovery calculations used are based on 4500 watt elements used in non-simultaneous operation.



LEED Point = 1

NOTE: On bottom entry models, cold input is tied into the drain valve.



In keeping with its policy of continuous progress and product improvement, Rheem reserves the right to make changes without notice.

Rheem Water Heating • 101 Bell Road
Montgomery, Alabama 36117-4305 • www.rheem.com

Rheem Canada Ltd./Ltée • 125 Edgeware Road, Unit 1
Brampton, Ontario L6Y 0P5 • www.rheem.com



INTEGRATED HOME COMFORT

01/13 WP FORM NO. 101-45CAN Rev. 19